



INDOFINE Chemical Company, Inc.

121 Stryker Lane, Bldg. 30, Suite 1 • Hillsborough, NJ 08844 • U.S.A.

Phone: (908) 359-6778 • FAX: (908) 359-1179

website: www.indofinechemical.com

e-mail: chemical@indofinechemical.com

CERTIFICATE OF ANALYSIS

Catalog Number: 04-2631

Product: **Z-L-TYROSINE METHYLESTER**

CAS Number: [13512-31-7]

Lot Number: 1410514

Chemical Formula: C₁₈H₁₉NO₅

Molecular Weight: 329.33

Melting Point: 86-94°C

Appearance: White powder

Moisture(KF): 0.22%

Loss on drying: 0.08%

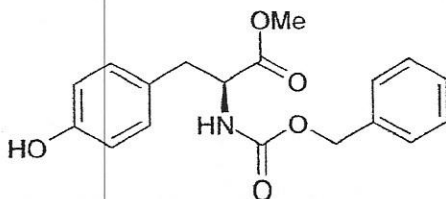
TLC: Chloroform:Methanol (9:1)

Solubility: Soluble in chloroform

NMR Spectrum: Enclosed (conforms to the structure)

Storage: Store in a cool, dry place

Purity(HPLC): 99.05%





INDOFINE Chemical Company, Inc.

121 Stryker Lane, Bldg. 30, Suite 1 • Hillsborough, NJ 08844 • U.S.A.

Phone: (908) 359-6778 • FAX: (908) 359-1179

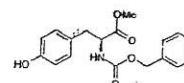
website: www.indofinechemical.com

e-mail: chemical@indofinechemical.com

HPLC ANALYSIS

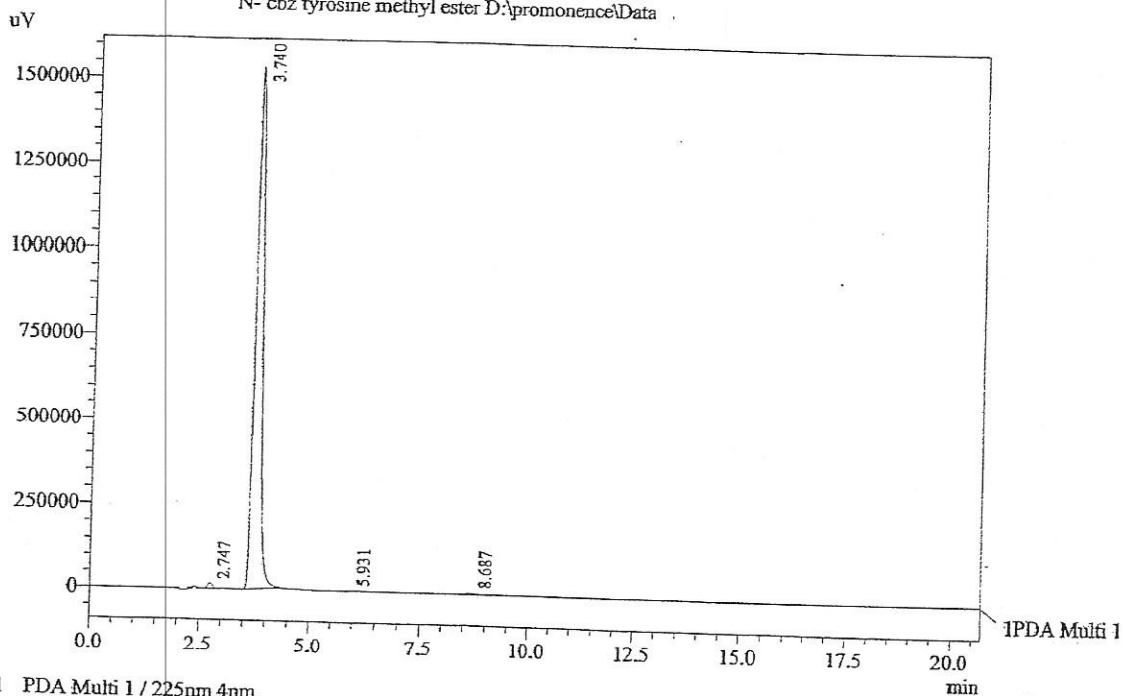
Acquired by : Sanjeev
 Sample Name : N- cbz tyrosine methyl ester
 Sample ID : BBML (Unit-2)
 Injection Volume : 20 uL
 Data Filename : 070414A.lcd
 Method Filename : Linear Isocratic.M.lcm

Catalog No.: 04-2631
 Product Name: Z-L-Tyrosine methylester
 Lot No.: 1410514



Column : LUNA C-18(2), (250mm x4.6mm 5.0μ)
 Flow : 1.000 mL/min.
 Mobile Phase : A(30% of 0.05% TFA in water) B(70% of Acetonitrile)

Chromatogram
 N- cbz tyrosine methyl ester D:\promonence\lData



1 PDA Multi 1 / 225nm 4nm

PeakTable

Peak#	Name	Ret. Time	Area	Area %	Relative Retention Time
1	RT:2.747	2.747	102980	0.58	0.73
2	Methyl ester cbz tyrosine	3.740	17620251	99.05	1.00
3	RT:5.952	5.931	2181	0.01	1.59
4	RT:8.685	8.687	64128	0.36	2.32
Total			17789539	100.00	



INDOFINE Chemical Company, Inc.

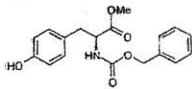
121 Stryker Lane, Bldg. 30, Suite 1 • Hillsborough, NJ 08844 • U.S.A.

Phone: (908) 359-6778 • FAX: (908) 359-1179

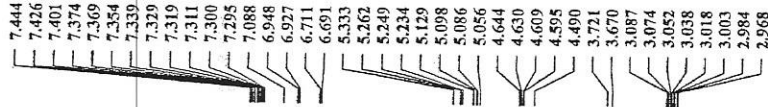
website: www.indofinechemical.com

e-mail: chemical@indofinechemical.com

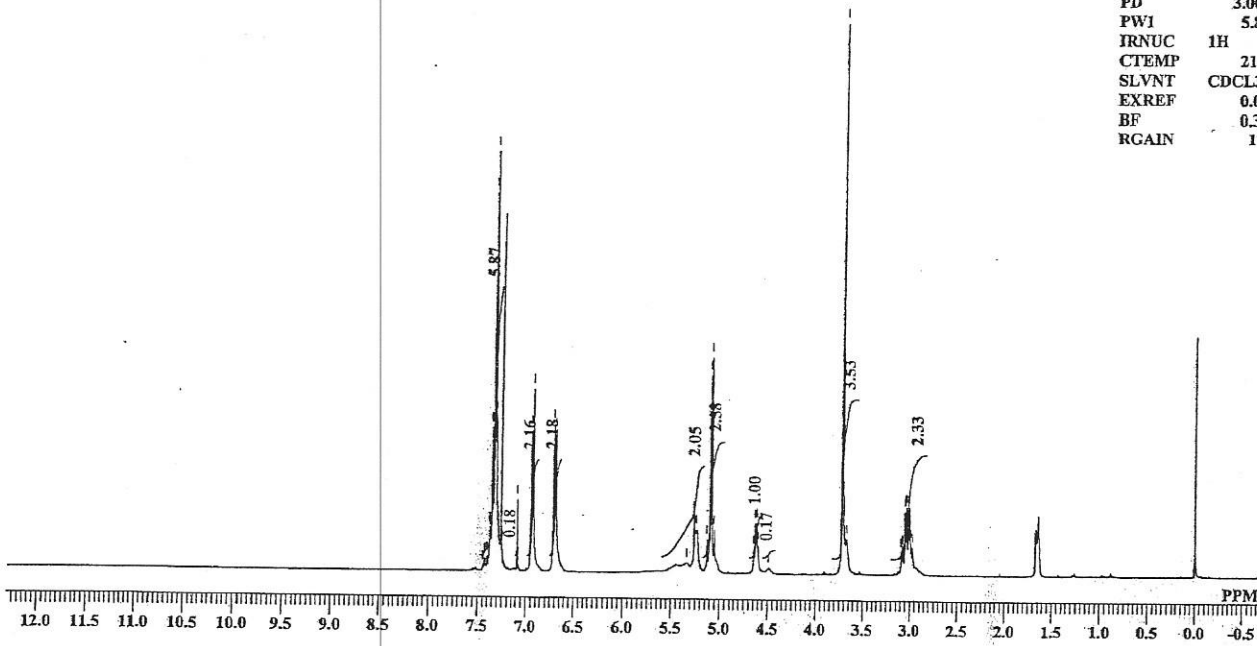
Catalog No.: 04-2631
Product Name: Z-L-Tyrosine methylester
Lot No.: 1410514



N-Cbz-Tyrosine methyl ester 1H NMR CDCl3
Analysed By: MSR



DFILE	N-Cbz-Tyrosine methyl ester 1H
COMNT	N-Cbz-Tyrosine methyl ester 1H
DATIM	Mon Apr 21 11:46:14 2014
OBNUC	1H
EXMOD	NON
OBFRQ	399.65 MHz
OBSET	124.00 KHz
OBFIN	10500.00 Hz
POINT	65536
FREQU	7992.01 Hz
SCANS	16
ACQTM	8.2002 sec
PD	3.0000 sec
PWI	5.80 usec
IRNUC	1H
CTEMP	21.0 c
SLVNT	CDCl3
EXREF	0.00 ppm
BF	0.30 Hz
RGAIN	17





INDOFINE Chemical Company, Inc.

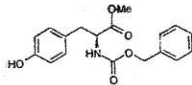
121 Stryker Lane, Bldg. 30, Suite 1 • Hillsborough, NJ 08844 • U.S.A.

Phone: (908) 359-6778 • FAX: (908) 359-1179

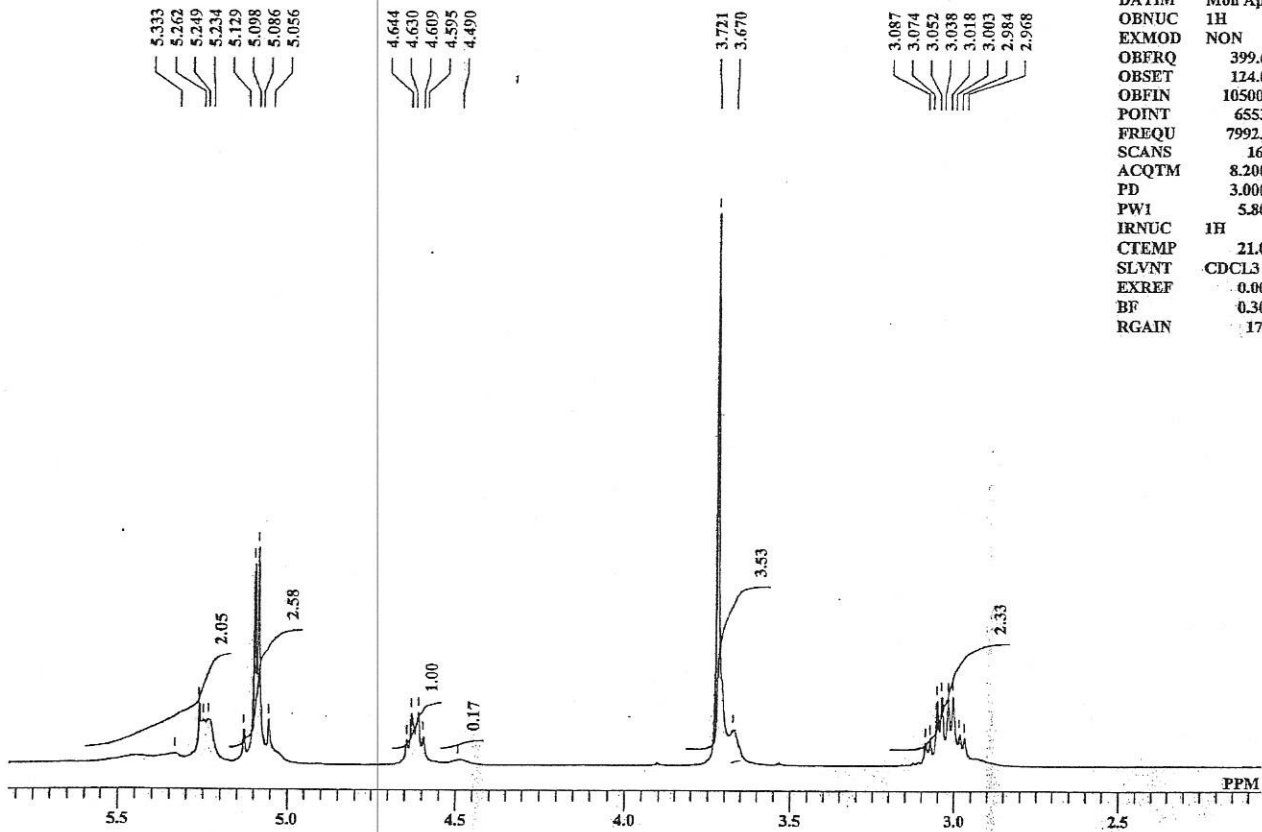
website: www.indofinechemical.com

e-mail: chemical@indofinechemical.com

Catalog No.: 04-2631
Product Name: Z-L-Tyrosine methylester
Lot No.: 1410514



N-Cbz-Tyrosine methyl ester 1H NMR CDCl3
Analysed By: MSR



DFILE N-Cbz-Tyrosine methyl ester 1H
COMNT N-Cbz-Tyrosine methyl ester 1H
DATIM Mon Apr 21 11:46:14 2014
OBNUC 1H
EXMOD NON
OBFRQ 399.65 MHz
OBSET 124.00 KHz
OBFIN 10500.00 Hz
POINT 65536
FREQU 7992.01 Hz
SCANS 16
ACQTM 8.2002 sec
PD 3.0000 sec
PW1 5.80 usec
IRNUC 1H
CTEMP 21.0 c
SLVNT CDCL3
EXREF 0.00 ppm
BF 0.30 Hz
RGAIN 17

ICG INDOFINE Chemical Company, Inc.

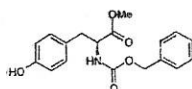
121 Stryker Lane, Bldg. 30, Suite 1 • Hillsborough, NJ 08844 • U.S.A.

Phone: (908) 359-6778 • FAX: (908) 359-1179

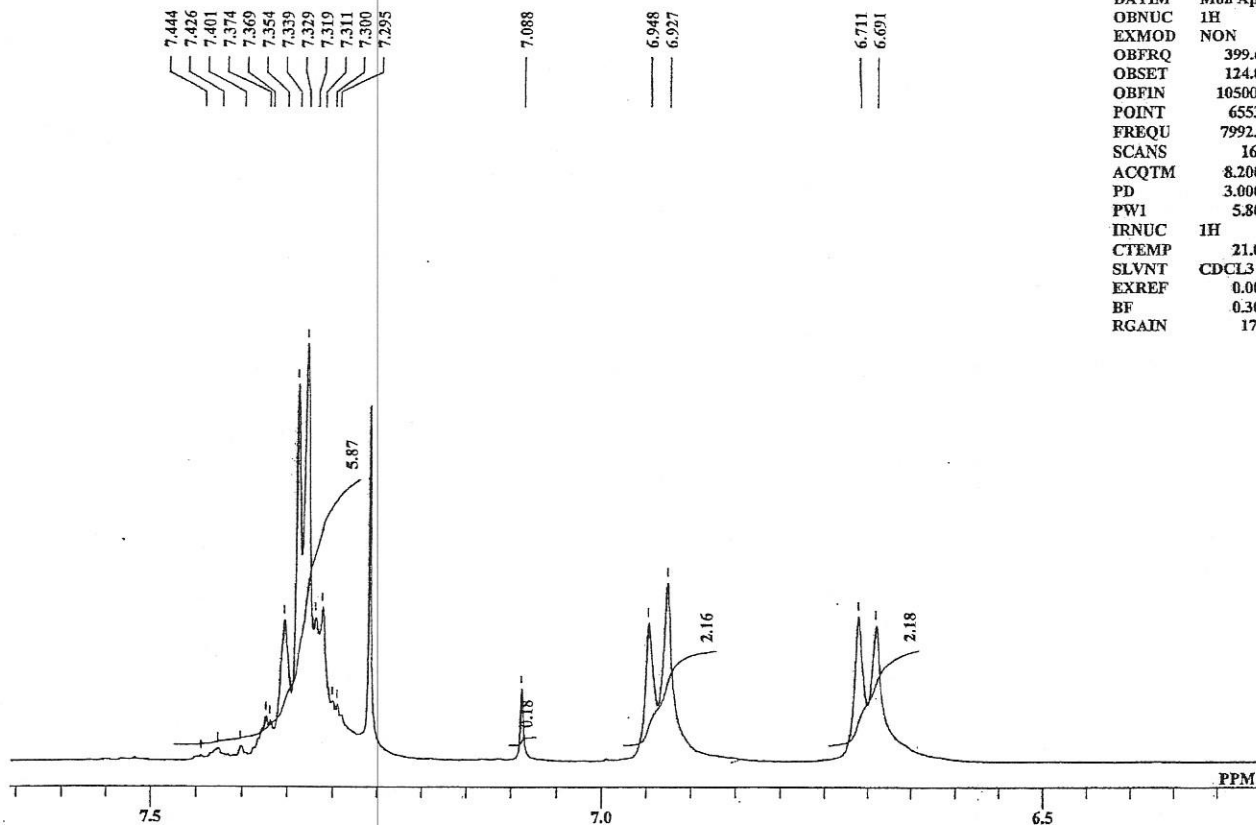
website: www.indofinechemical.com

e-mail: chemical@indofinechemical.com

Catalog No.: 04-2631
Product Name: Z-L-Tyrosine methylester
Lot No.: 1410514



N-Cbz-Tyrosine methyl ester 1H NMR CDCl3
Analysed By : MSR



DFILE	N-Cbz-Tyrosine methyl ester 1H
COMNT	N-Cbz-Tyrosine methyl ester 1H
DATIM	Mon Apr 21 11:46:14 2014
OBNUC	1H
EXMOD	NON
OBFRQ	399.65 MHz
OBSET	124.00 KHz
OBFIN	10500.00 Hz
POINT	65536
FREQU	7992.01 Hz
SCANS	16
ACQTM	8.2002 sec
PD	3.0000 sec
PWI	5.80 usec
IRNUC	1H
CTEMP	21.0 c
SLVNT	CDCl3
EXREF	0.00 ppm
BF	0.30 Hz
RGAIN	17